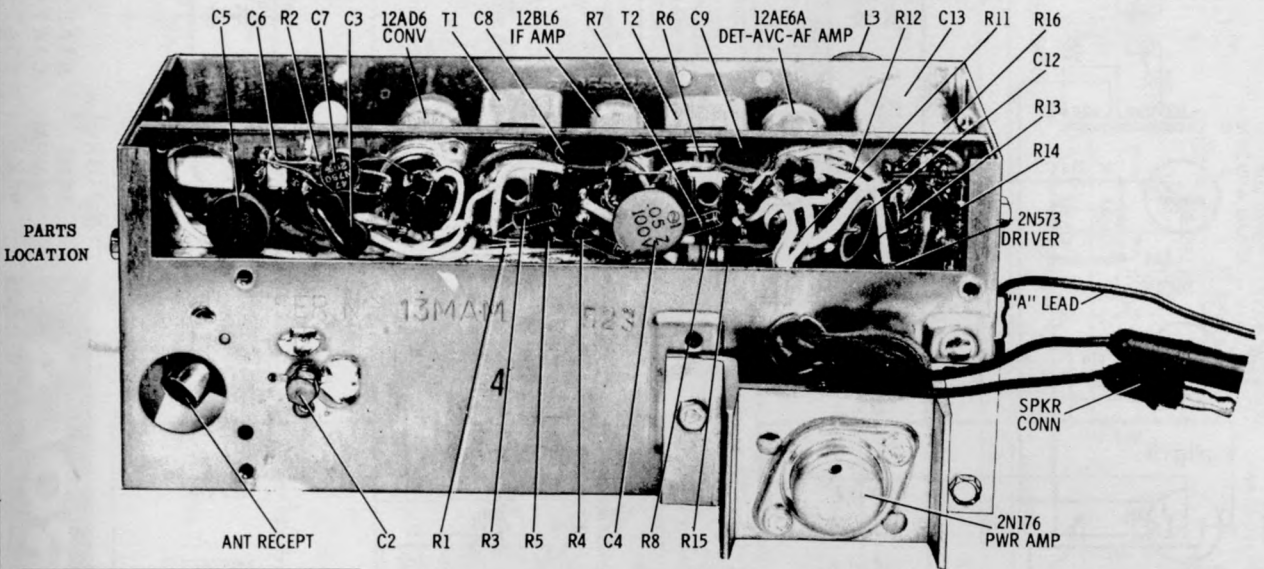
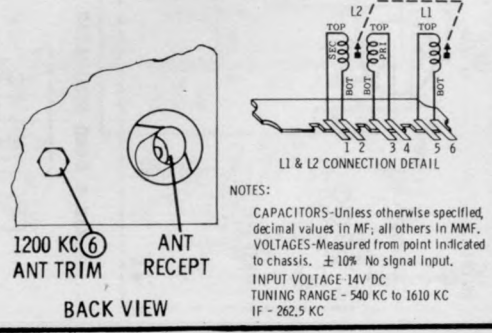
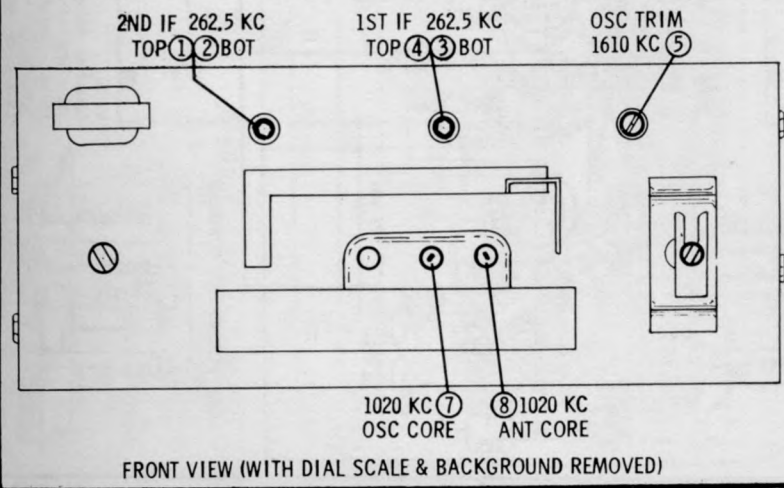
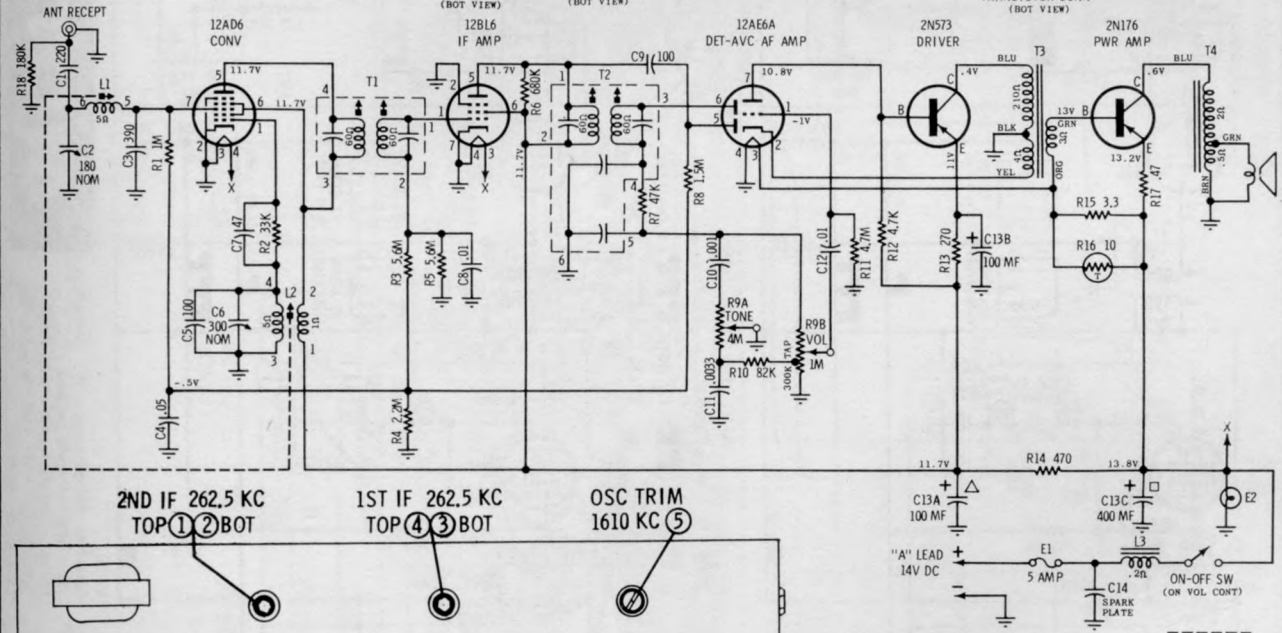
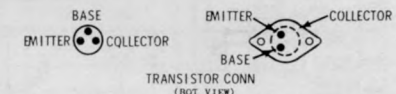


MOTOROLA

MODEL
MOTOROLA 13MAM
AMERICAN MOTORS 8990831



CAUTION
"A" LEAD MUST BE CONNECTED TO POSITIVE (+) SIDE OF POWER SUPPLY. RADIO WILL NOT OPERATE AND DAMAGE TO COMPONENTS WILL RESULT IF CONNECTED OTHERWISE.



NOTES:
CAPACITORS—Unless otherwise specified, decimal values in MF; all others in MMF.
VOLTAGES—Measured from point indicated to chassis. ± 10% No signal input.
INPUT VOLTAGE—14V DC
TUNING RANGE—540 KC to 1610 KC
IF—262.5 KC

FRONT VIEW (WITH DIAL SCALE & BACKGROUND REMOVED)

BACK VIEW